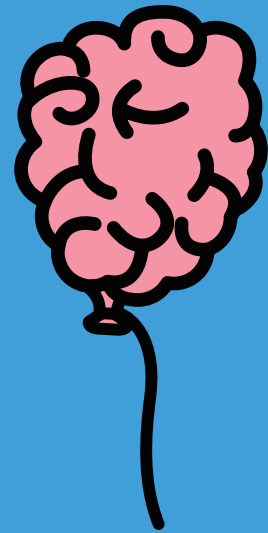


Sunday: Useful tips for remembering your handbrake.



It should be one of those reflex things; you find a place to park your car, you put on the handbrake and then you switch off the engine. Of course, we all know it doesn't always go like that.

We analysed 12 months of claims data – 89,608 car, home and contents claims made between July 2019 to June 2020 – for The Mistake Report.

It turns out Sunday is when you are most likely to forget something relating to your car – and in 43 per cent of those cases, the thing we've forgotten to do is put on the handbrake.

This kind of mistake is especially annoying because we all know better, we just forget. But there is an easy-to-remember system for parking right every time – no mistakes.

When you park your vehicle, follow the technique known as **HIT**.

H is for **handbrake on**. Use that sucker. If you are driving an older car, that means pulling the lever between the driver and front passenger seat. Other cars will have a handbrake button situated between the seats or on the dashboard, or the parking brake will be operated using a foot pedal.

I is for vehicle **in gear**. If you drive a manual, leave it in gear – reverse if you are facing downhill and first gear if facing uphill.

T is for **turn your wheels**. Move your steering wheel so your wheels are pointing towards the kerb. That way if you do roll, it will be into the kerb and not down the road.

And if you just can't remember to use the handbrake, put a warning sticker on the dashboard. It could save you money and a red face.

